




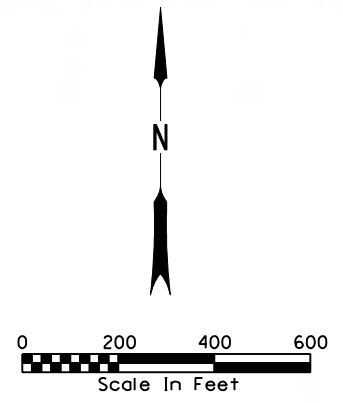
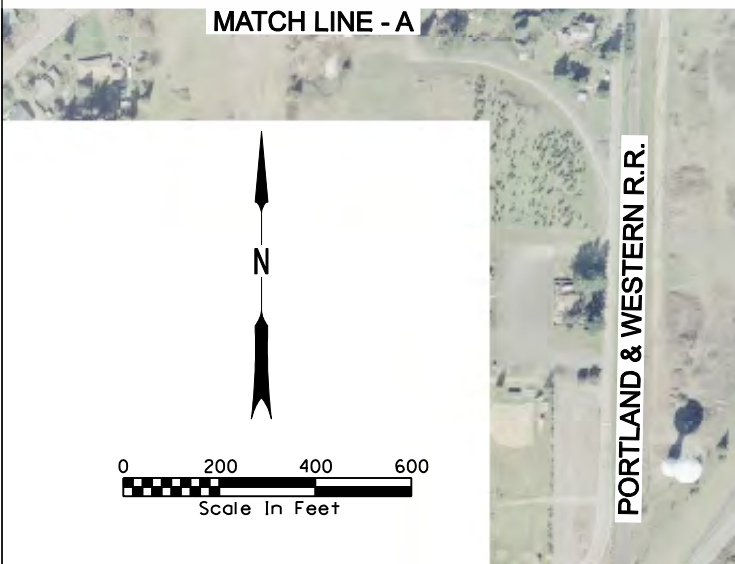
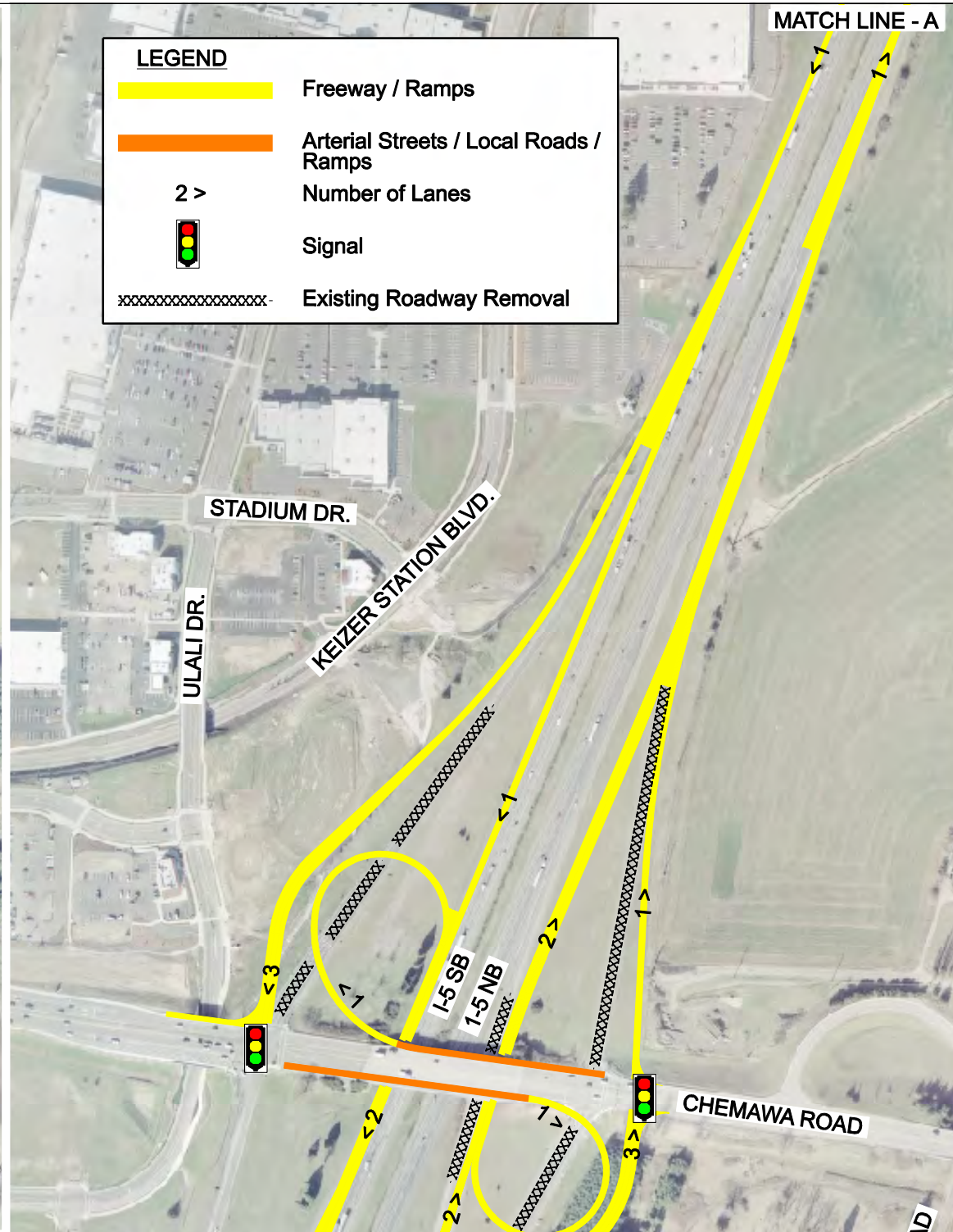


LEGEND

-  Freeway / Ramps
-  Arterial Streets / Local Roads / Ramps
-  Number of Lanes
-  Signal
-  Existing Roadway Removal



OREGON DEPARTMENT OF TRANSPORTATION
ROADWAY ENGINEERING SECTION

CHEMAWA ROAD IAMP
 DRAFT ALTERNATIVE 2
 CHEMAWA PARTIAL CLOVERLEAF A
 MARION COUNTY

10/17/08